



GRK 2 (phospho Ser29) Polyclonal Antibody

Catalog No	YP-Ab-14447
Isotype	IgG
Reactivity	Human;Mouse;Rat
Applications	WB;IHC;IF;ELISA
Gene Name	ADRBK1
Protein Name	Beta-adrenergic receptor kinase 1
Immunogen	The antiserum was produced against synthesized peptide derived from human GRK2 around the phosphorylation site of Ser29. AA range:14-63
Specificity	Phospho-GRK 2 (S29) Polyclonal Antibody detects endogenous levels of GRK 2 protein only when phosphorylated at S29.
Formulation	Liquid in PBS containing 50% glycerol, 0.5% BSA and 0.02% sodium azide.
Source	Polyclonal, Rabbit,IgG
Purification	The antibody was affinity-purified from rabbit antiserum by affinity-chromatography using epitope-specific immunogen.
Dilution	WB: 1/500 - 1/2000. IHC: 1/100 - 1/300. ELISA: 1/10000.. IF 1:50-200
Concentration	1 mg/ml
Purity	≥90%
Storage Stability	-20°C/1 year
Synonyms	ADRBK1; BARK; BARK1; GRK2; Beta-adrenergic receptor kinase 1; Beta-ARK-1; G-protein coupled receptor kinase 2
Observed Band	80kD
Cell Pathway	Cytoplasm . Cell membrane . Cell junction, synapse, postsynapse . Cell junction, synapse, presynapse .
Tissue Specificity	Expressed in peripheral blood leukocytes.
Function	catalytic activity:ATP + [beta-adrenergic receptor] = ADP + [beta-adrenergic receptor] phosphate.,catalytic activity:ATP + a protein = ADP + a phosphoprotein.,function:Specifically phosphorylates the agonist-occupied form of the beta-adrenergic and closely related receptors, probably inducing a desensitization of them.,online information:Beta adrenergic receptor kinase entry,similarity:Belongs to the protein kinase superfamily. AGC Ser/Thr protein kinase family. GPRK subfamily.,similarity:Contains 1 AGC-kinase C-terminal domain.,similarity:Contains 1 PH domain.,similarity:Contains 1 protein kinase domain.,similarity:Contains 1 RGS domain.,subunit:Interacts with GIT1 (By similarity). Interacts with, and phosphorylates chemokine-stimulated CCR5.,tissue specificity:Expressed in peripheral blood leukocytes.,
Background	The product of this gene phosphorylates the beta-2-adrenergic receptor and appears to mediate agonist-specific desensitization observed at high agonist



concentrations. This protein is an ubiquitous cytosolic enzyme that specifically phosphorylates the activated form of the beta-adrenergic and related G-protein-coupled receptors. Abnormal coupling of beta-adrenergic receptor to G protein is involved in the pathogenesis of the failing heart. [provided by RefSeq, Jul 2008],

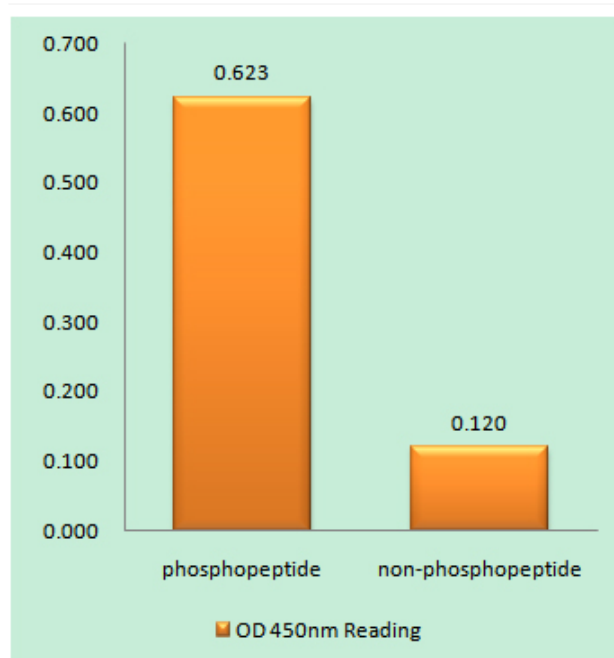
matters needing attention

Avoid repeated freezing and thawing!

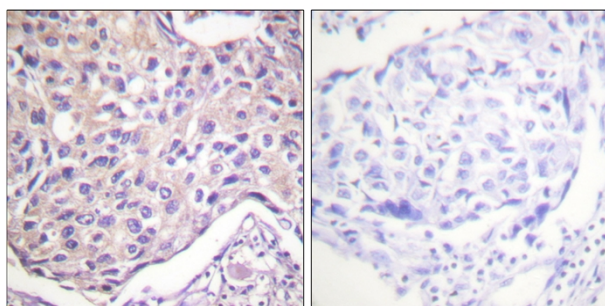
Usage suggestions

This product can be used in immunological reaction related experiments. For more information, please consult technical personnel.

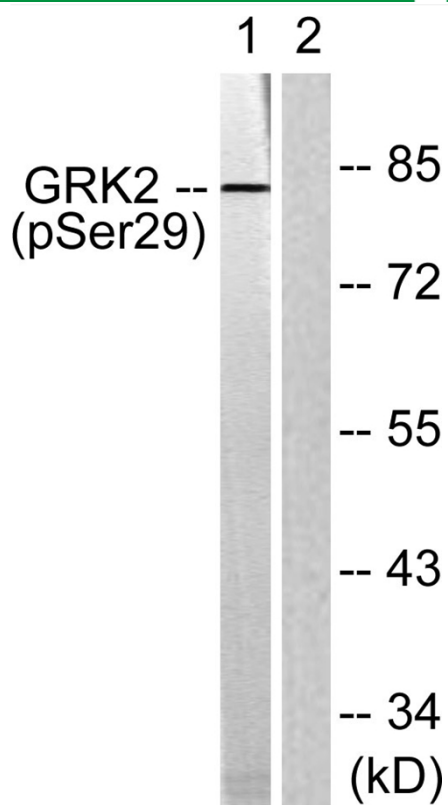
Products Images



Enzyme-Linked Immunosorbent Assay (Phospho-ELISA) for Immunogen Phosphopeptide (Phospho-left) and Non-Phosphopeptide (Phospho-right), using GRK2 (Phospho-Ser29) Antibody



Immunohistochemistry analysis of paraffin-embedded human breast carcinoma, using GRK2 (Phospho-Ser29) Antibody. The picture on the right is blocked with the phospho peptide.



Western blot analysis of lysates from Jurkat cells treated with EGF 200ng/ml 30', using GRK2 (Phospho-Ser29) Antibody. The lane on the right is blocked with the phospho peptide.